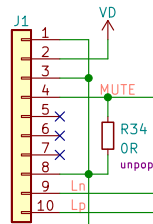


W-Output XLR v2.0

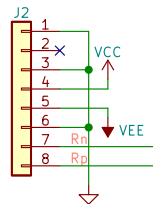
Two versions:
 -Addon for W-DAC
 -Standalone

Addon version doesn't include:
 -input buffers because it's driven by W-DAC output stage
 -mute circuit because it uses W-DAC's mute circuit
 -power connector as signals are taken via edge headers

Standalone version is meant for single-ended to balanced conversion, for example, or balanced buffer.

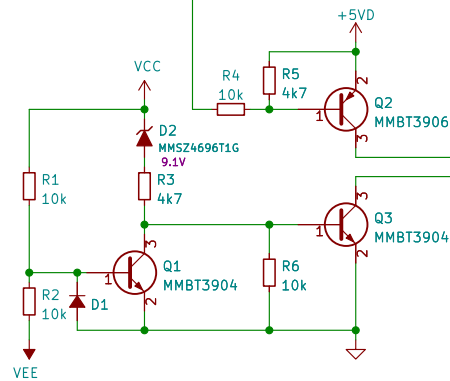


Pop R34 (or use jumper on J1:3-4) if external Mute control is not needed in Standalone version.

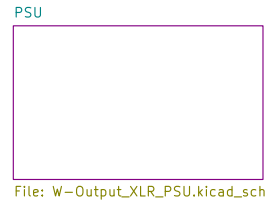
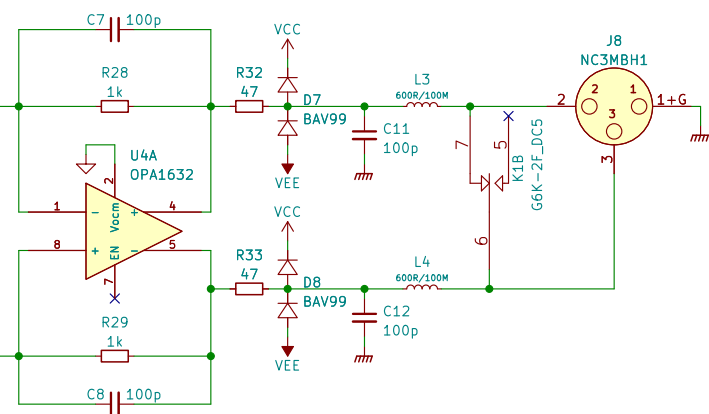
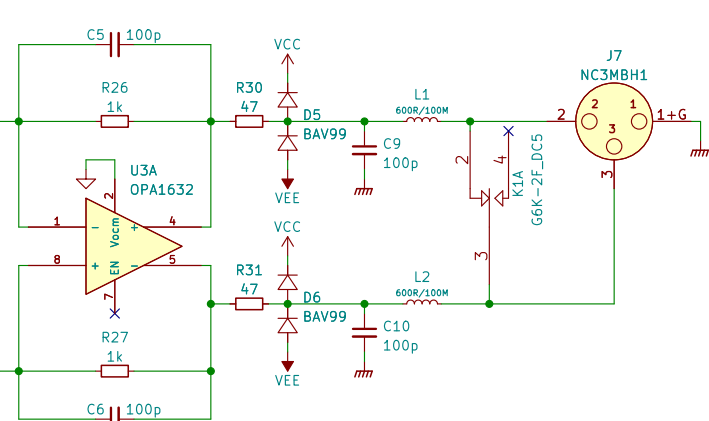
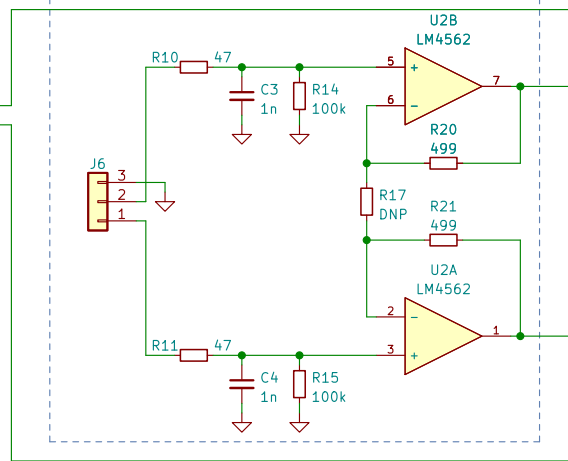
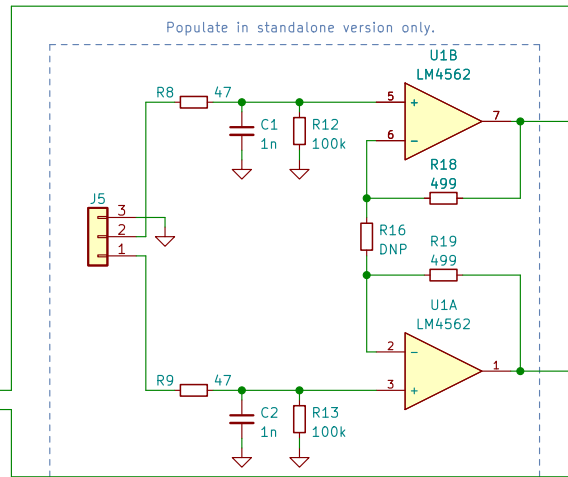


Populate in standalone version only.

A bug! SVD should be VD. Now it is not connected to anything!



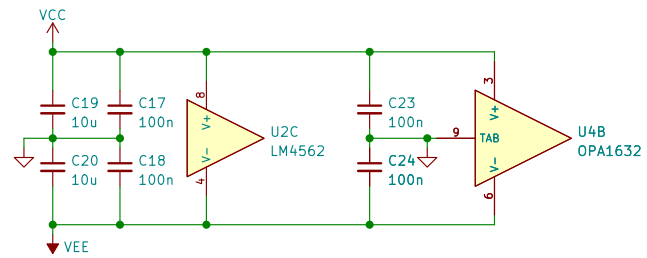
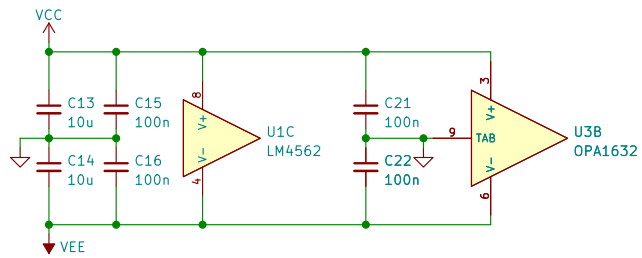
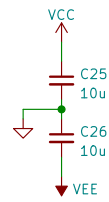
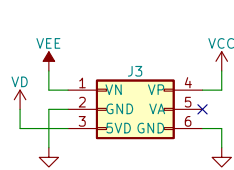
Mute and supply monitor.
 Mute releases in following conditions:
 -MUTE_REL is low.
 -SVD supply is up.
 -VCC and VEE are up.
 -VCC and VEE are (fairly) symmetrical.



File: W-Output_XLR_PSU.kicad_sch

Kaamos Tech Ltd	
W-Output XLR	
Sheet: /	
File: W-Output_XLR.kicad_sch	
Size: A4	Date: 2023-06-15
KiCad E.D.A.	Rev: v2.0
kicad (6.0.9)	Id: 1/2

Power



Kaamos Tech Ltd

W-Output XLR

Sheet: /PSU/
File: W-Output_XLR_PSU.kicad_sch

Size: A4	Date: 2023-06-15	Rev: v2.0
KiCad E.D.A.	kicad (6.0.9)	Id: 2/2