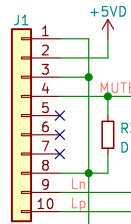


W-Output XLR v2.1

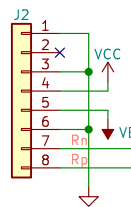
Two versions:
 -Addon for W-DAC
 -Standalone plugin

Addon version doesn't include:
 -input buffers because it's driven by W-DAC output stage
 -power and input signal connector as they are taken via edge headers
 -It also doesn't need mute circuit if J4 connection to W-DAC is used.

Standalone version is meant for single-ended to balanced conversion or balanced buffer.

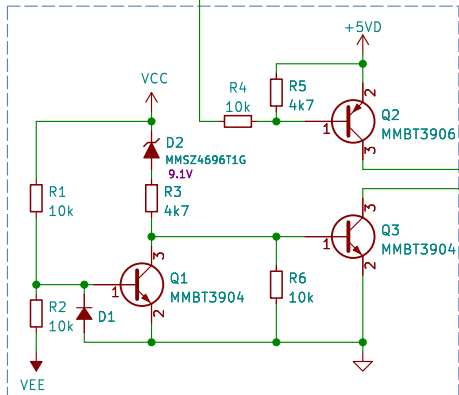


Pop R34 OR (or use jumper on J1:3-4) if external Mute control is not needed in Standalone version.

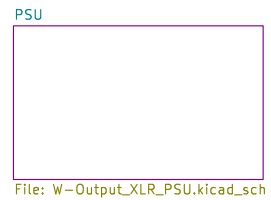
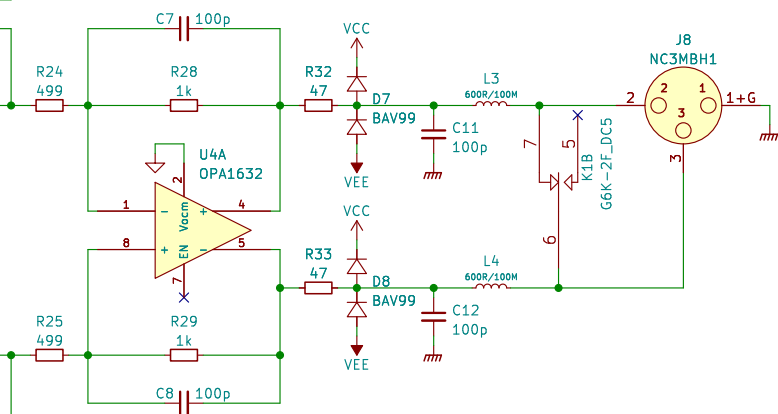
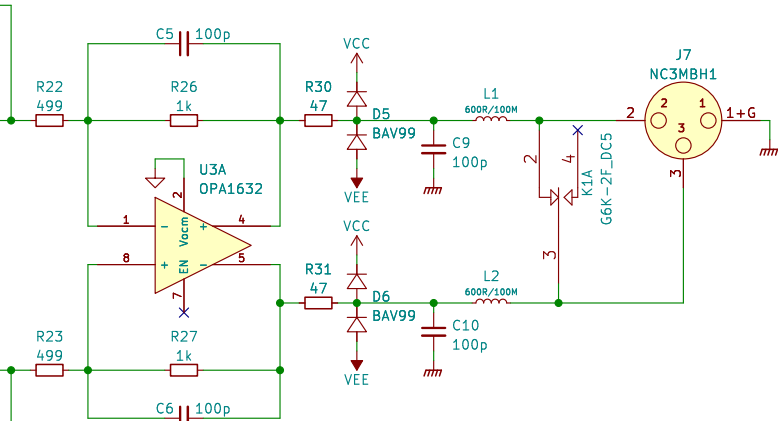
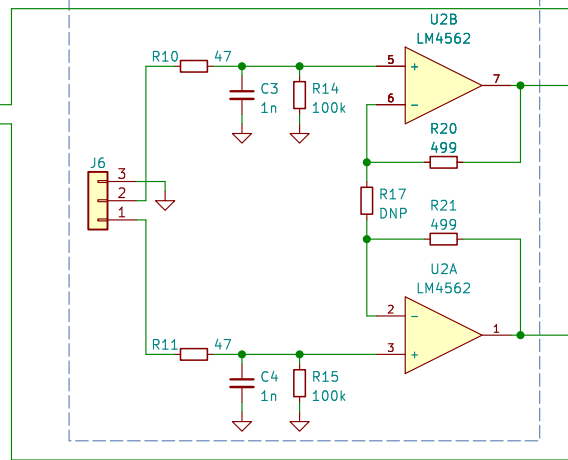
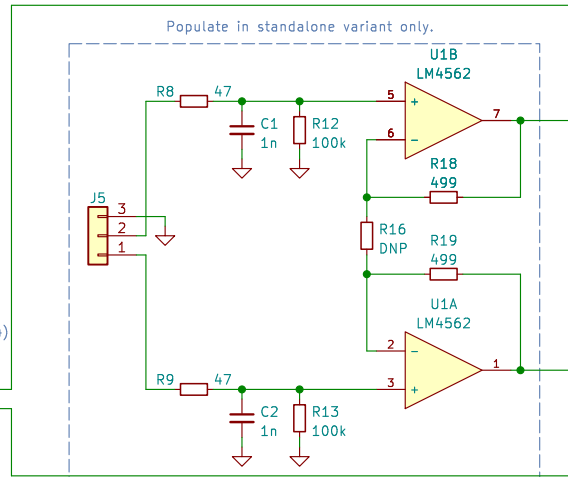


Edge headers not needed in standalone variant.

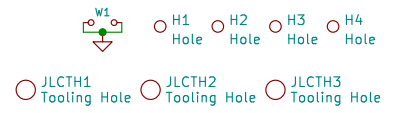
Not needed in addon variant if J4 to W-DAC is used.



Mute and supply monitor.
 Mute releases in following conditions:
 -MUTE_REL is low.
 -5VD supply is up.
 -VCC and VEE are up.
 -VCC and VEE are (fairly) symmetrical.

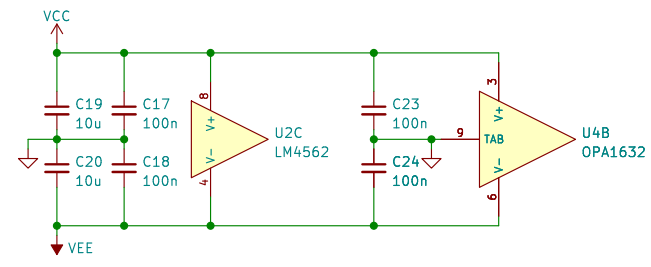
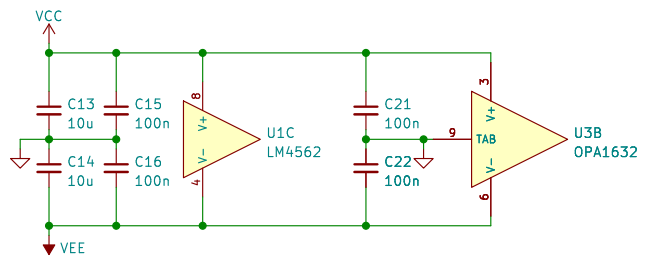
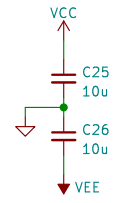
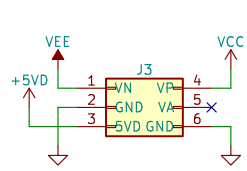


File: W-Output_XLR_PSU.kicad_sch



Kaamos Tech Ltd - Tomi Nihtila		
W-Output XLR		
Sheet: /		
File: W-Output_XLR.kicad_sch		
Size: A4	Date: 2023-08-20	Rev: v2.1
KiCad E.D.A.	kicad 7.0.5	Id: 1/2

Power



Kaamos Tech Ltd – Tomi Nihtila		
W-Output XLR		
Sheet: /PSU/ File: W-Output_XLR_PSU.kicad_sch		
Size: A4	Date: 2023-08-20	Rev: v2.1
KiCad E.D.A.	kicad 7.0.5	Id: 2/2